

amir prestige



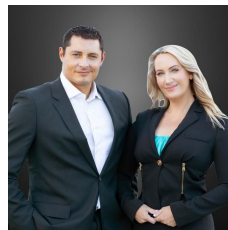
41B Tallebudgera Creek Road Burleigh Heads QLD

Inspection By Appointment

Nestled amongst the hub of thriving businesses in one of Gold Coasts busiest precincts, take advantage of this rare opportunity to grow your business. Situated at the busy intersection linking the M1 Highway traffic to Burleigh Heads and Tallebudgera, this location receives high local and city exposure alike. This revitalised area is a bustling community with a wide variety of businesses in the street, and is surrounded by beautiful buildings set amongst nature and local wildlife. Easy street parking or ample off-street parking for your customers at the rear.

This prime location offers a current hybrid of light manufacturing with retail frontage, as well as having been used as a mechanics yard in the past with sub-ground workers pit and steel beams for engine hoists and rail

Building Size : 200 sqm
Land Size : 1012 sqm
View : <https://www.amirprestige.com.au/sale/ql/gold-coast/burleigh-heads/commercial/industrial/7253072>



Alex & Victoria Fleri
07 5532 9996



Amir Mian
07 5555 1600