

amir prestige



18 Belair Crescent PARADISE POINT QLD

Sovereign Shores provides the last opportunity on the Gold Coast for a boutique estate of new homes that are quite literally right by the beach. Having the ability to build 3 levels with a rooftop terrace or basement garage this is the ultimate site to build your dream home.

Surrounded by water on three sides, you can stroll along the Boardwalk to beaches, restaurants etc; what a way to start your day and finish with a sunset drink on your balcony watching the boats pass across the breathtaking Broadwater.

These particular blocks take a prime position within the estate with a northern aspect and broad-walk pathway means only neighbours on each side. With the ability to build on 60% of the site and a zero allotment you can maximise the land and use the space as required.

Land Size : 543 sqm

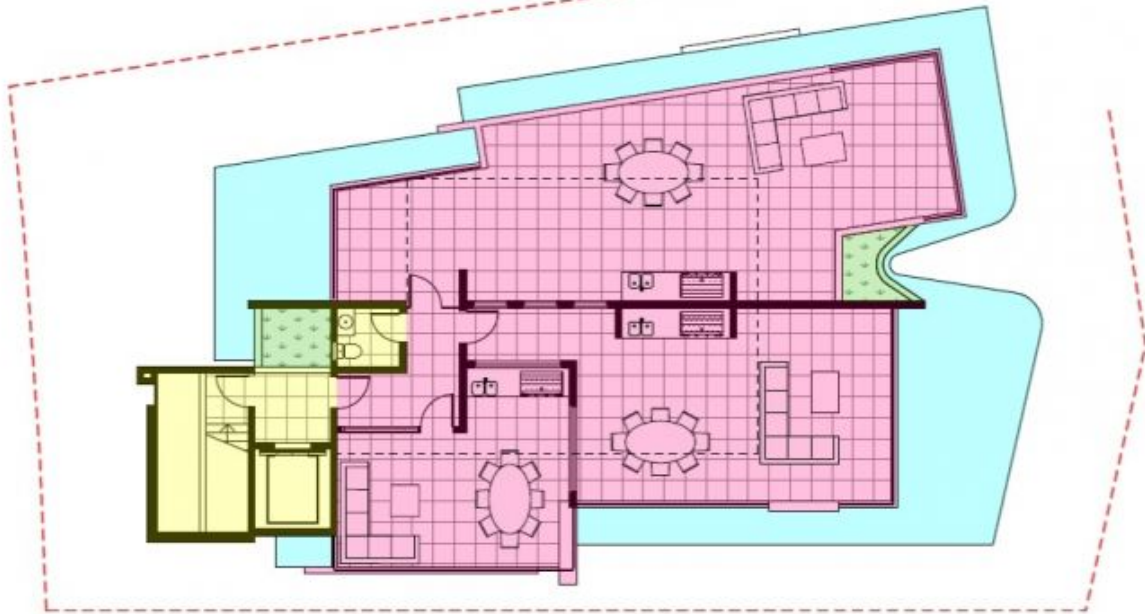
View : <https://www.amirprestige.com.au/sale/qld/gold-coast/paradise-point/residential/land/7253547>

ROOF TERRACE AREA PLAN SCALE 1:100

LEGEND

| | |
|------------|---------|
| OPA | 32 SQM |
| BALCONY | 198 SQM |
| PLANTER | 75 SQM |
| SUNSHADING | 80 SQM |

| TOTAL AREAS | |
|-------------|-----------|
| OPA | 1,177 SQM |
| BALCONY | 371 SQM |
| PLANTER | 40 SQM |
| SUNSHADING | 146 SQM |



| | | | | | | | | | |
|------------------------------|--|--|------------------------------------|-----------------------------------|--|-----------------------|------------|--|---------------------|
| APPLICANT TESFAME PTY LTD | DISCLAIMER These drawings are conceptual design drawings only. The information contained herein is subject to design development and further to be confirmed by planning, engineering, services and other technical considerations. | COPYRIGHT Copyright in this drawing is the property of BDA Architecture and may not be without, express permission in writing or used without the prior written permission of the architect or its authorized personnel and agents. | PROJECT NAME 18 BELAIR CRESCENT | DRAWING ROOF TERRACE AREA PLAN | PROJECT NO.: 480339 SCALE: 1:100 @ A3 DATE: 06/02/2021 | DRAWING NO. DD.108 | SHEET 8 | DATE: 06/02/2021 DRAWN BY: [Signature] CHECKED BY: [Signature] DATE: 06/02/2021 | bda architecture |
|------------------------------|--|--|------------------------------------|-----------------------------------|--|-----------------------|------------|--|---------------------|

FIRST & SECOND FLOOR PLAN SCALE 1:100

LEGEND

| | |
|------------|---------|
| OPA | 381 SQM |
| BALCONY | 46 SQM |
| PLANTER | 55 SQM |
| SUNSHADING | 32 SQM |

| TOTAL AREAS | |
|-------------|-----------|
| OPA | 1,177 SQM |
| BALCONY | 371 SQM |
| PLANTER | 40 SQM |
| SUNSHADING | 146 SQM |



| | | | | | | | | | |
|------------------------------|--|--|------------------------------------|---|--|-----------------------|------------|--|---------------------|
| APPLICANT TESFAME PTY LTD | DISCLAIMER These drawings are conceptual design drawings only. The information contained herein is subject to design development and further to be confirmed by planning, engineering, services and other technical considerations. | COPYRIGHT Copyright in this drawing is the property of BDA Architecture and may not be without, express permission in writing or used without the prior written permission of the architect or its authorized personnel and agents. | PROJECT NAME 18 BELAIR CRESCENT | DRAWING FIRST / SECOND FLOOR AREA PLAN | PROJECT NO.: 480339 SCALE: 1:100 @ A3 DATE: 06/02/2021 | DRAWING NO. DD.107 | SHEET 8 | DATE: 06/02/2021 DRAWN BY: [Signature] CHECKED BY: [Signature] DATE: 06/02/2021 | bda architecture |
|------------------------------|--|--|------------------------------------|---|--|-----------------------|------------|--|---------------------|