

amir prestige



28 Shirley Street Southport QLD

4 🚗 2 🚗 3 🚗

Nestled in the business heart of the Gold Coast and perched just a few kilometres north of the city's heaving glitter strip, Southport is a family-friendly haven where convenience reigns supreme.

Land Size : 664 sqm
View : <https://www.amirprestige.com.au/sale/qld/gold-coast/southport/residential/house/7844928>

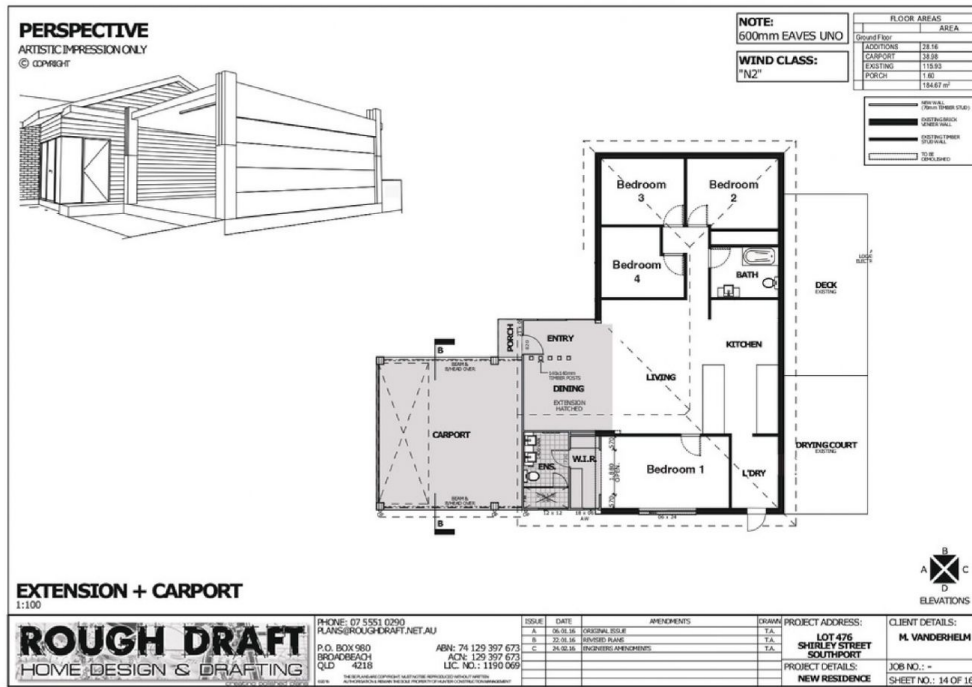
Southport's virtues are many. The suburb contains the Gold Coast CBD and easy access to some of the city's oldest and most prestigious schools, shopping precincts and parks - not to mention some lovely beaches too.

Today, it houses the larger-than-life Australia Fair Shopping Centre, China Town, Southport Broadwater Parklands, and the Gold Coast Aquatic Centre and is walking distance to trams, trains, local parks and shops.

There's a laid-back charm that seems to reverberate throughout the older, leafy streets that stretch inland from



Ian & Jennie Adams
(07) 5555 1600



Whilst Amir Prestige Property Agents have made every attempt to ensure the accuracy of all measurements of this floor plan, Amir Prestige take no responsibility for any errors, omissions, or mis-statement. This plan is for illustrative purposes only.

IAN ADAMS - 0412 080 290

amir prestige

JENNIE ADAMS - 0427 608 290