

amir prestige



2282-2284 Gold Coast Highway MERMAID BEACH QLD

7 🏠 3 🚗 6 🚗

First Time Offered - Prime Development & Investment Holding

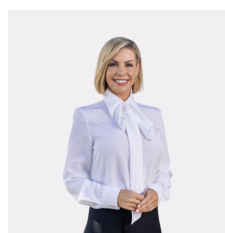
For the first time ever, this tightly held landholding brings together two premium east-facing properties - unlocking a rare dual-access development site in the heart of Mermaid Beach.

Each 405m2 block is zoned Medium Density Residential, offering flexibility to develop (STCA), land bank, renovate, or lease for immediate returns. Combined, they create a 810m2 opportunity in one of the Gold Coast's most tightly held beachside pockets.

This is a standout chance to acquire prime land with strong redevelopment potential, lifestyle appeal, and long-term

[For full version visit the website](https://www.amirprestige.com.au/sale/qld/gold-coast/mermaid-beach/residential/house/8693235)

Type : House
Price : SOLD!
Land Size : 810 sqm
View : <https://www.amirprestige.com.au/sale/qld/gold-coast/mermaid-beach/residential/house/8693235>



Carlie Mills
0433341896

<https://www.amirprestige.com.au>
Gold Coast Luxury Real Estate

29.8m Block Length / Depth



Total Land Size 405m²

2282 Gold Coast Hwy, Mermaid Beach

BED 4 BATH 2 CAR 2

Internal: 134 m² | External: 36 m² | Approx Total: 170 m²

amir prestige

Whilst every attempt has been made to ensure the accuracy of the floor plan contained here, measurements of doors, windows, rooms and any other item are approximate and no responsibility is taken for any error, omission, or misstatement. This plan is for illustrative purposes only and should only be used as such by any prospective purchaser.



Location Map

Location Map Legend

- 1. Residence
- 2. Pacific Fair
- 3. Surfers Paradise Golf Club
- 4. Q Super Centre
- 5. Miami State High School

57 Dolphin Avenue, Mermaid Beach

BED 3-4 BATH 1 CAR 2

Internal: 121 m² | External: 60 m² | Approx Total: 181 m²

amir prestige

Whilst every attempt has been made to ensure the accuracy of the floor plan contained here, measurements of doors, windows, rooms and any other item are approximate and no responsibility is taken for any error, omission, or misstatement. This plan is for illustrative purposes only and should only be used as such by any prospective purchaser.

