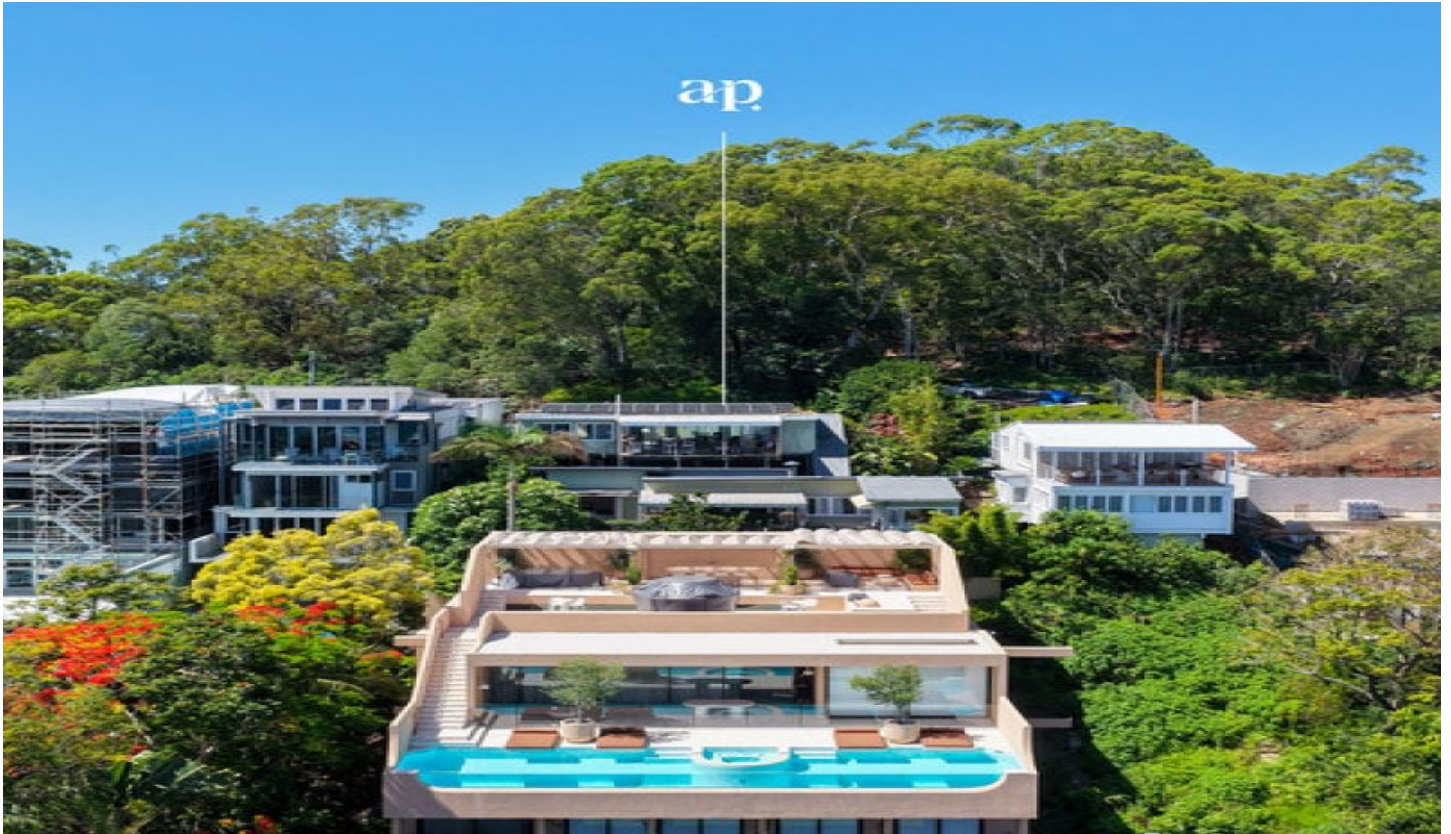


amir prestige



81 George Street BURLEIGH HEADS QLD

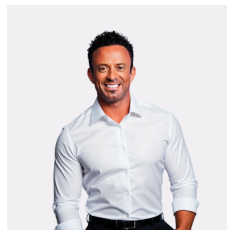
4 🏠 3 🚗 2 🚘

Perched high above the iconic Burleigh Heads surf beach, '81 George Street, Burleigh Heads' presents an extraordinary hilltop holding with unparalleled views and unlimited possibilities. Offered for the first time in more than half a century and held by the same family throughout that time, this is a truly rare chance to secure one of Burleigh's most tightly held and visually commanding residential sites. Set on an elevated, North facing, 553m incline block at the very edge of Burleigh Heads National Park, the property enjoys a breathtaking vantage point overlooking the Pacific Ocean, Burleigh's famous surf break, and the sweeping Gold Coast skyline beyond. From sunrise over the ocean to golden hinterland sunsets, the outlook is nothing short of spectacular - and only grows more impressive with height and time. The existing residence is ripe for transformation,

Type : House

Price : Contact Agent ASAP - In Negotiations

View : <https://www.amirprestige.com.au/sale/qld/gold-coast/burleigh-heads/residential/house/8700273>



Ross Tomain
0409 556 360

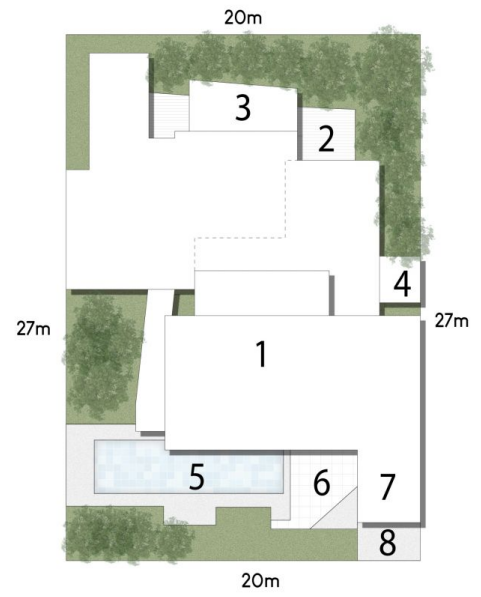
[For full version visit the website](https://www.amirprestige.com.au)

<https://www.amirprestige.com.au>
Gold Coast Luxury Real Estate



SITE PLAN LEGEND

1. Residence
2. Balcony
3. Covered Patio
4. Shed
5. Pool
6. Porch
7. Carport
8. Driveway



BED 4 BATH 2.5 CAR 1

Internal: 241 m² | External: 163 m² | Approx Total: 404 m²

amir prestige

Whilst every attempt has been made to ensure the accuracy of the floor plan contained here, measurements of doors, windows, rooms and any other item are approximate and no responsibility is taken for any error, omission, or misstatement. This plan is for illustrative purposes only and should only be used as such by any prospective purchaser.

